

Voici la ville où je vis.

C'est un peu pollué
et un peu bruyant.

ぼくがすんでいるのは こんなところ

ちよっとくうきがわるい
ちよっとうるさい

Dans quel genre d'endroit vis-tu ?

あなたのすんでいるところは どんなくあい？



J'ai dessiné cette maison sur une colline.

おかのうえに ぼくはこんなおうちを かきました



Voici mon endroit préféré.

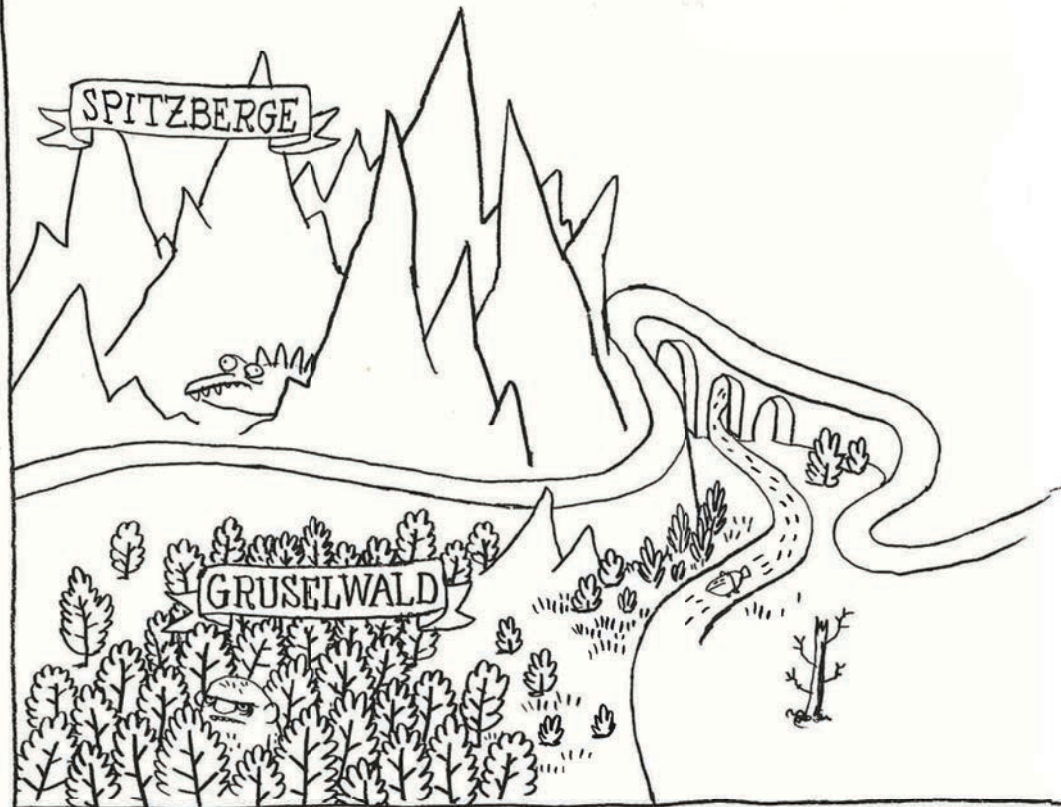
ここがぼくのいちばんすきなところ

À quoi ressemble ton endroit préféré ?

あなたのすきな ばしょは？



DER WEG ZUM SCHLOSS

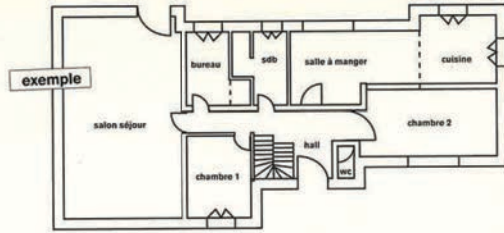


SCHLOSS

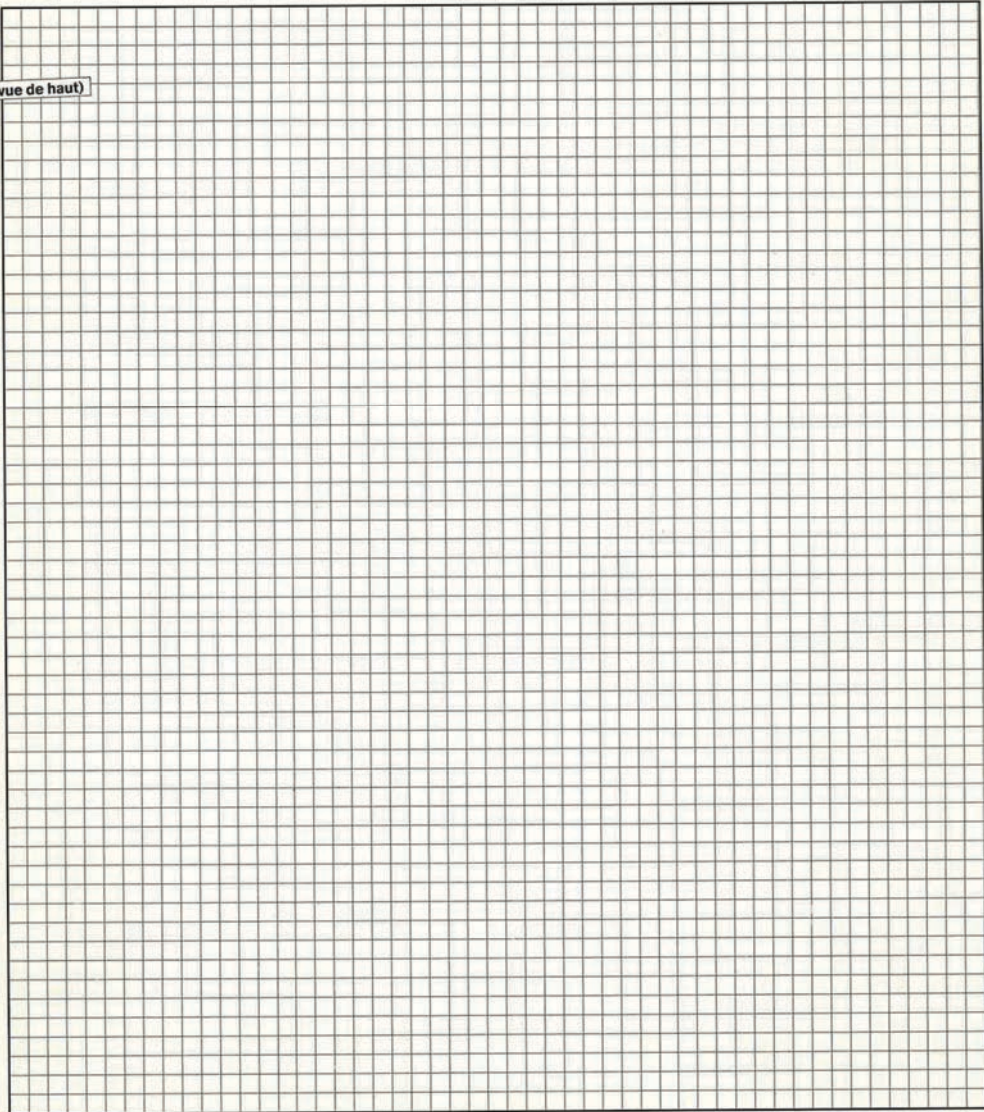


j'ai toujours rêvé d'être
architecte

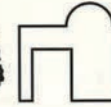
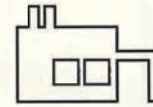
et avoir une très grande piscine



plan (vue de haut)



exemples

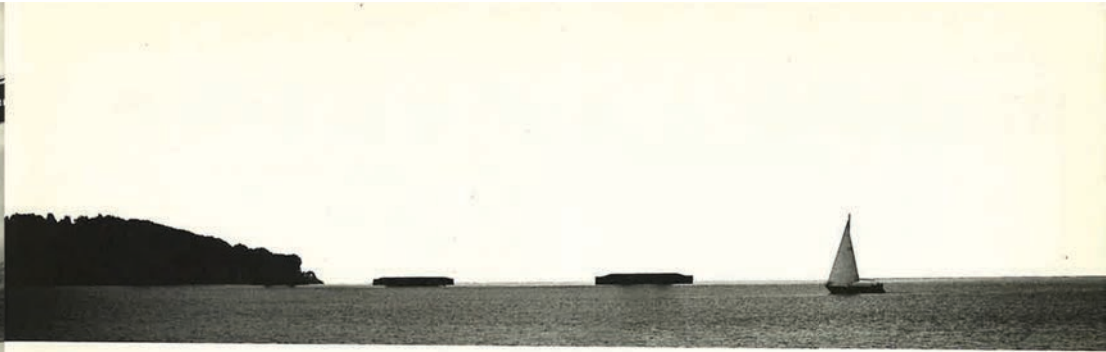


plan (vue de façade)



j'ai toujours rêvé d'être
architecte

que ferais-tu à la place?

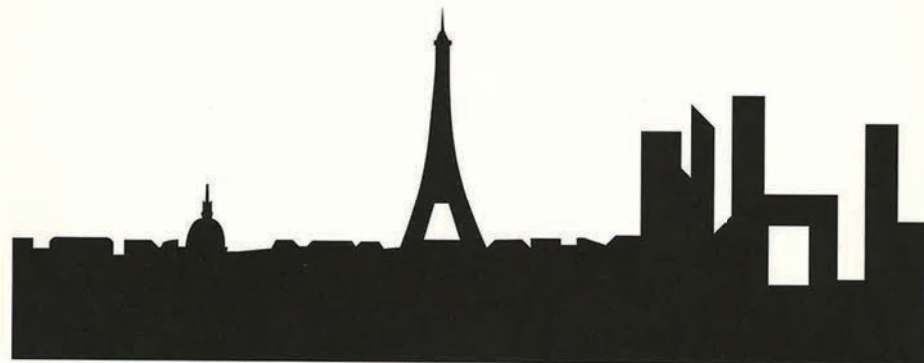


j'ai toujours rêvé d'être
urbaniste

parce que c'est beau, une ville la nuit



NEW YORK

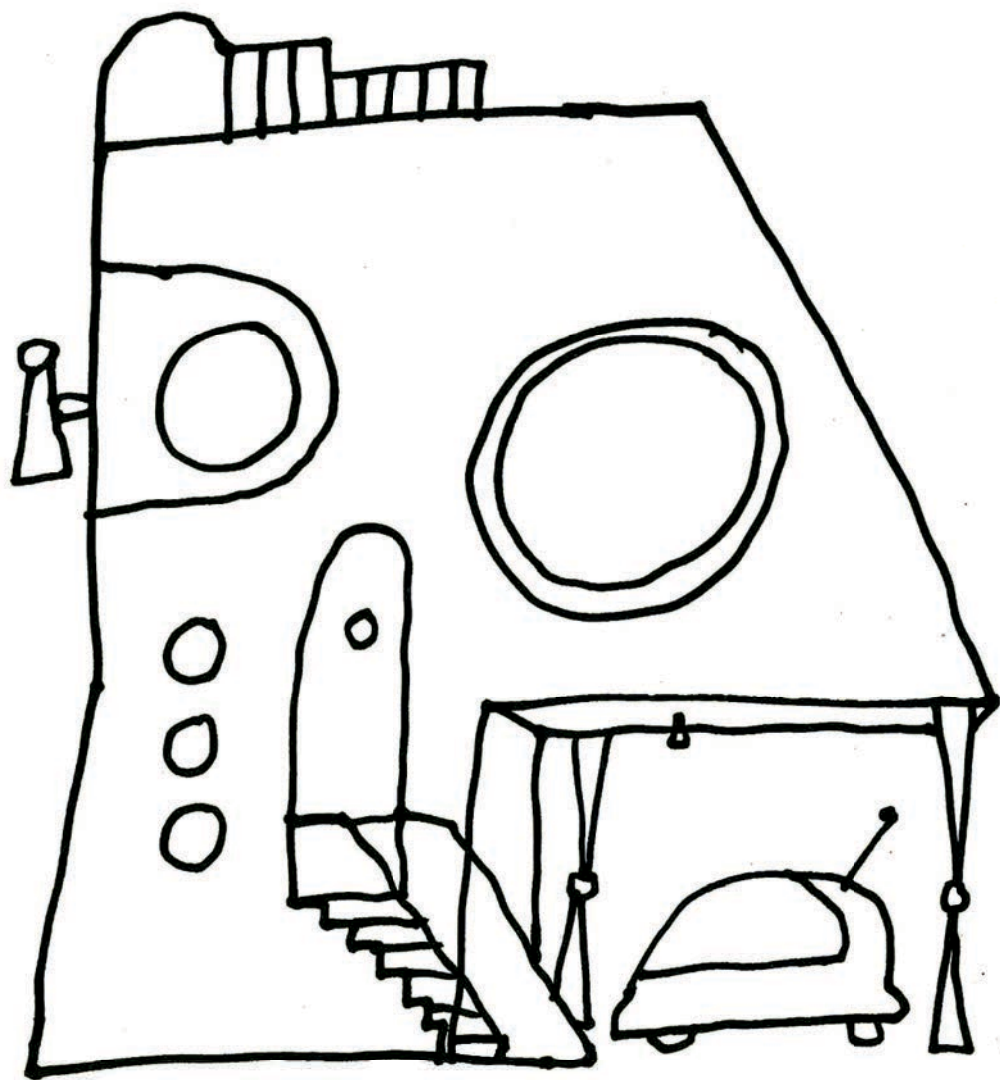


PARIS



TOKYO

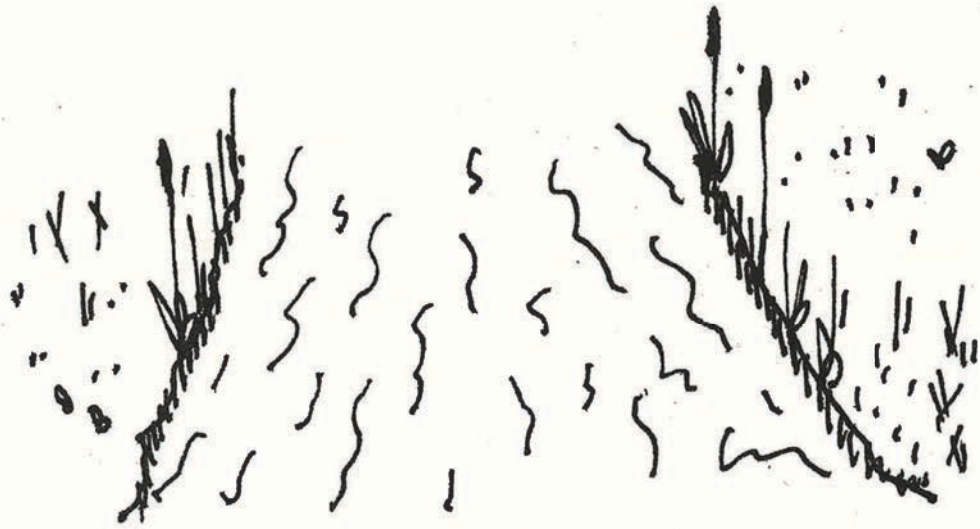




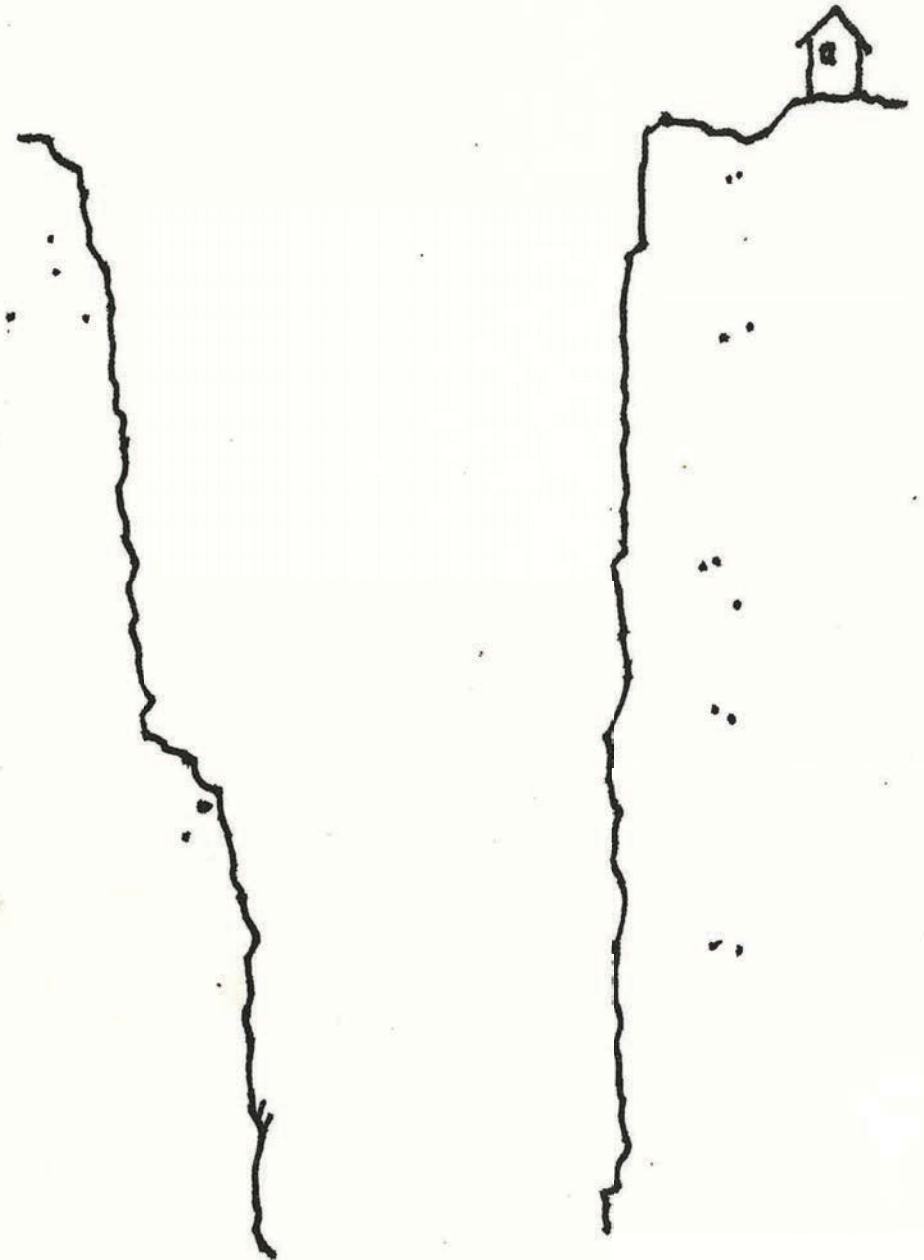
Can you draw a bridge?



DRAW A LITTLE STONE BRIDGE OVER THIS PRETTY STREAM

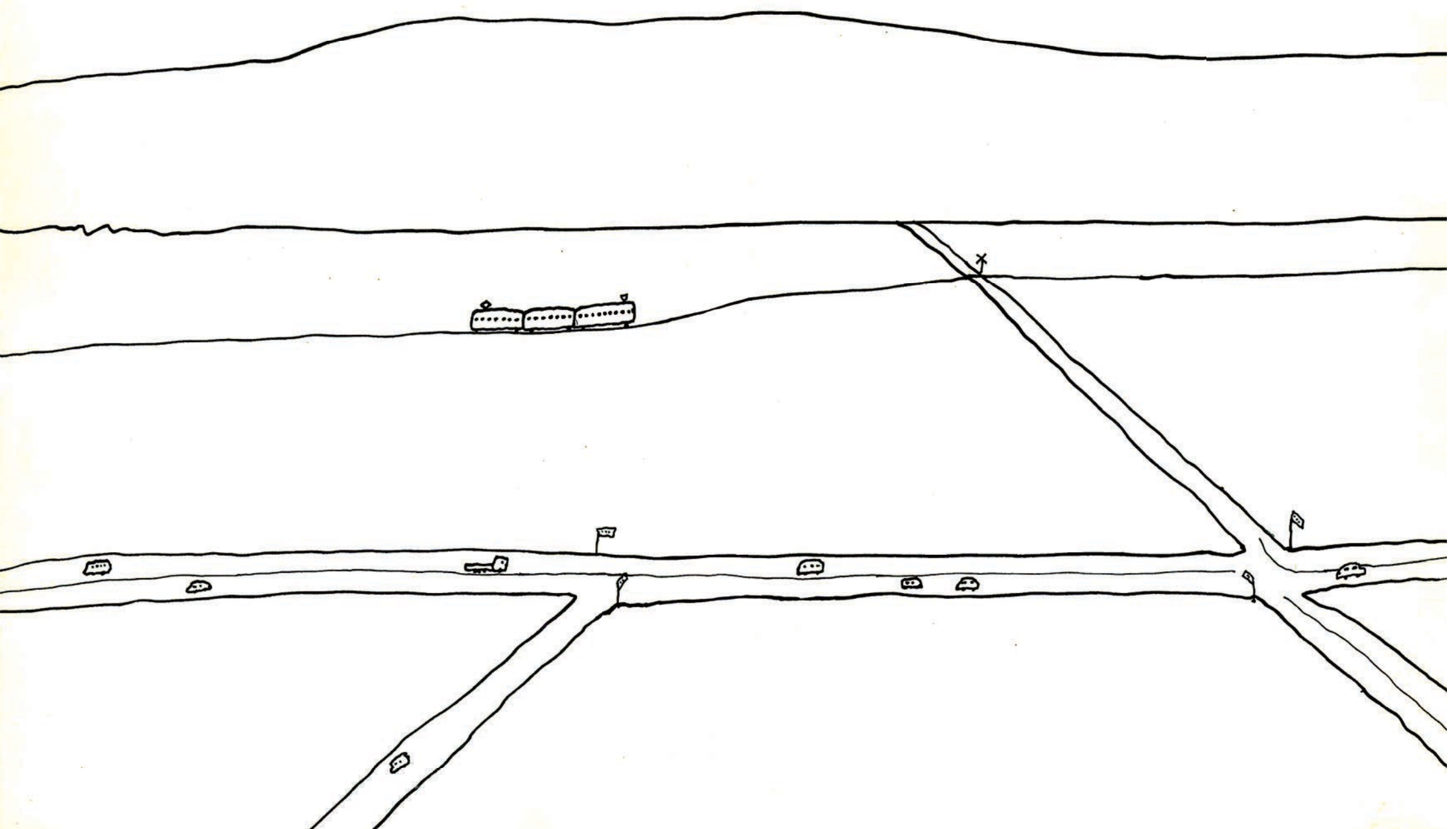


DRAW A GREAT BIG BRIDGE OVER THIS PRECIPITOUS GORGE



Draw lots of houses

Add some fields, schools and shops too



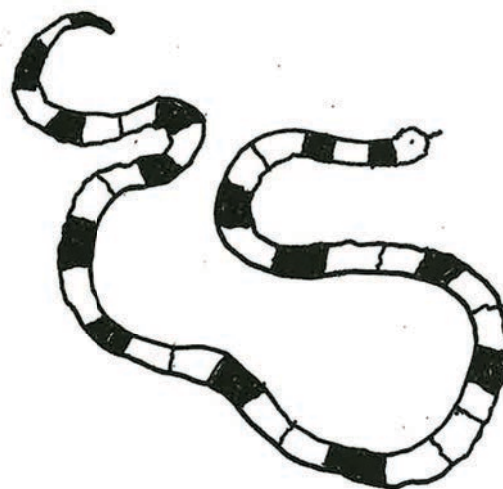
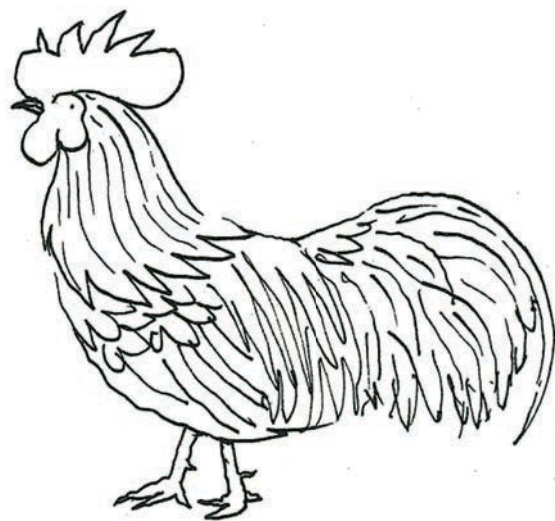
LIGNE CONTINUE



PAUL KLEE ÉTAIT CONNU POUR EMMENER LES LIGNES EN PROMENADE.
DESSINE UNE LIGNE CONTINUE SANS DÉTACHER LA POINTE DE TON CRAYON
DE LA SURFACE DU PAPIER. EN SUIVANT CE PRINCIPE, DESSINE CE QUE
TU IMAGINES D'UNE PROMENADE DANS TA VILLE OU DANS TON VILLAGE.

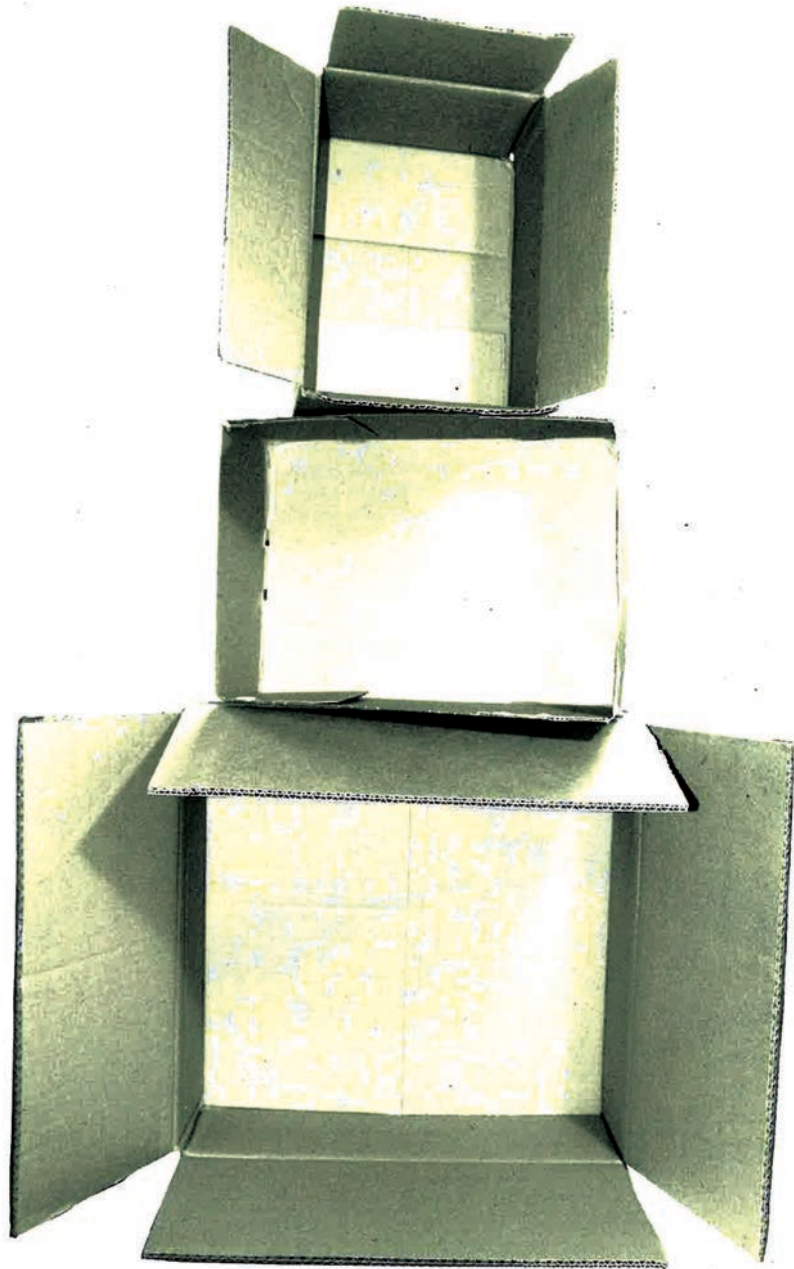
ANIMAL HOUSE

DRAW A HOUSE
FOR EACH OF THESE ANIMALS

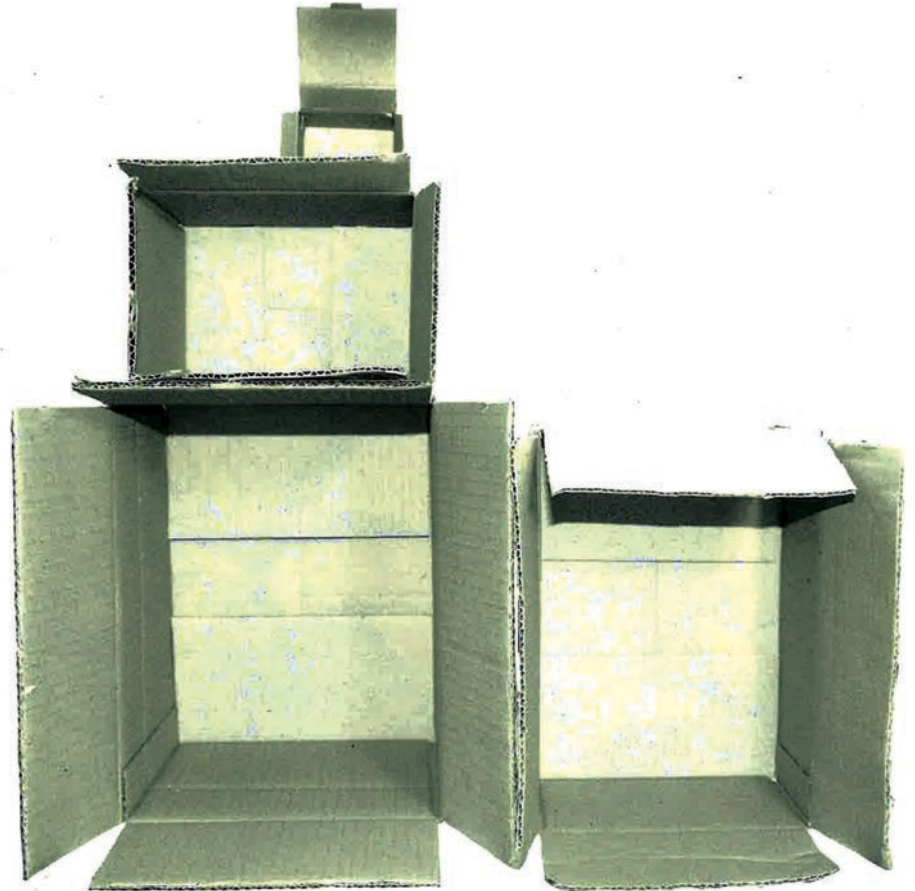


Teken een reuzekat die over de daken loopt



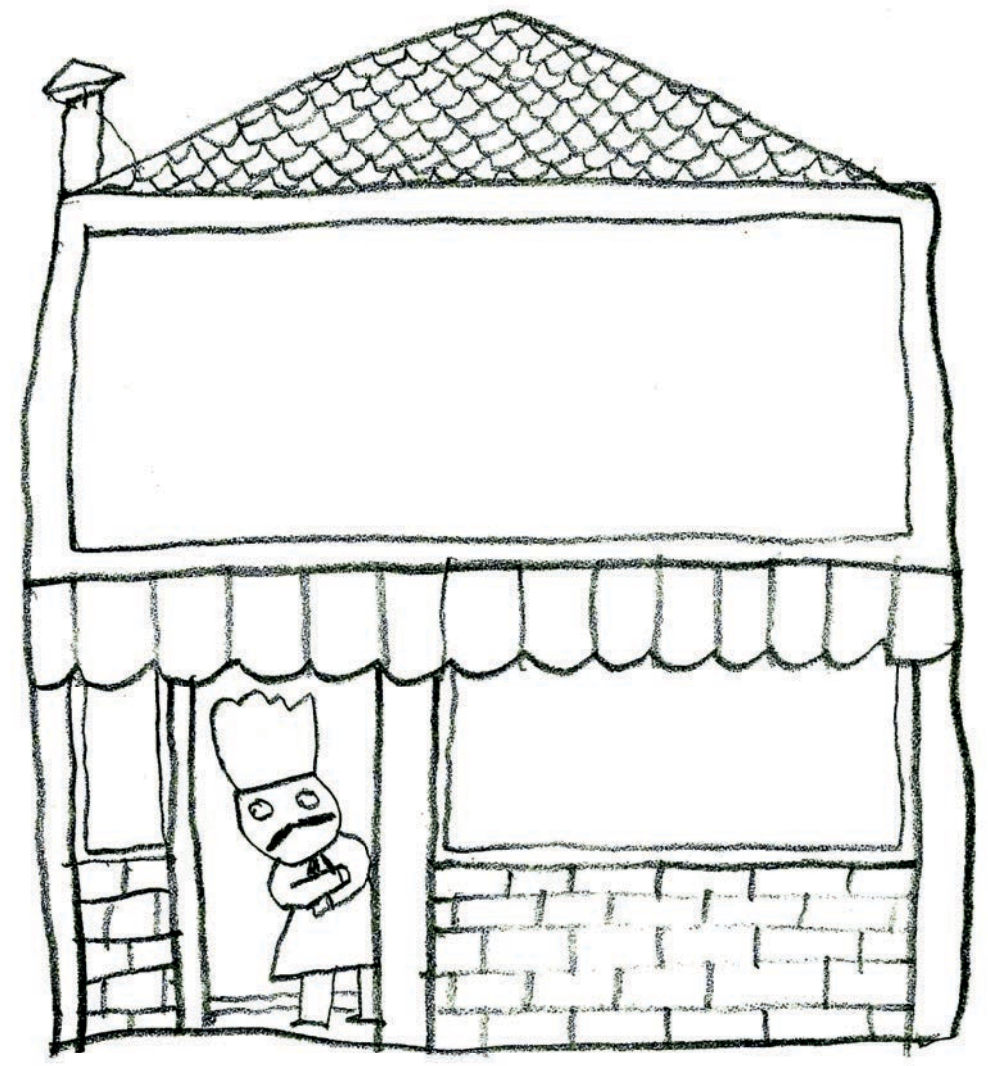
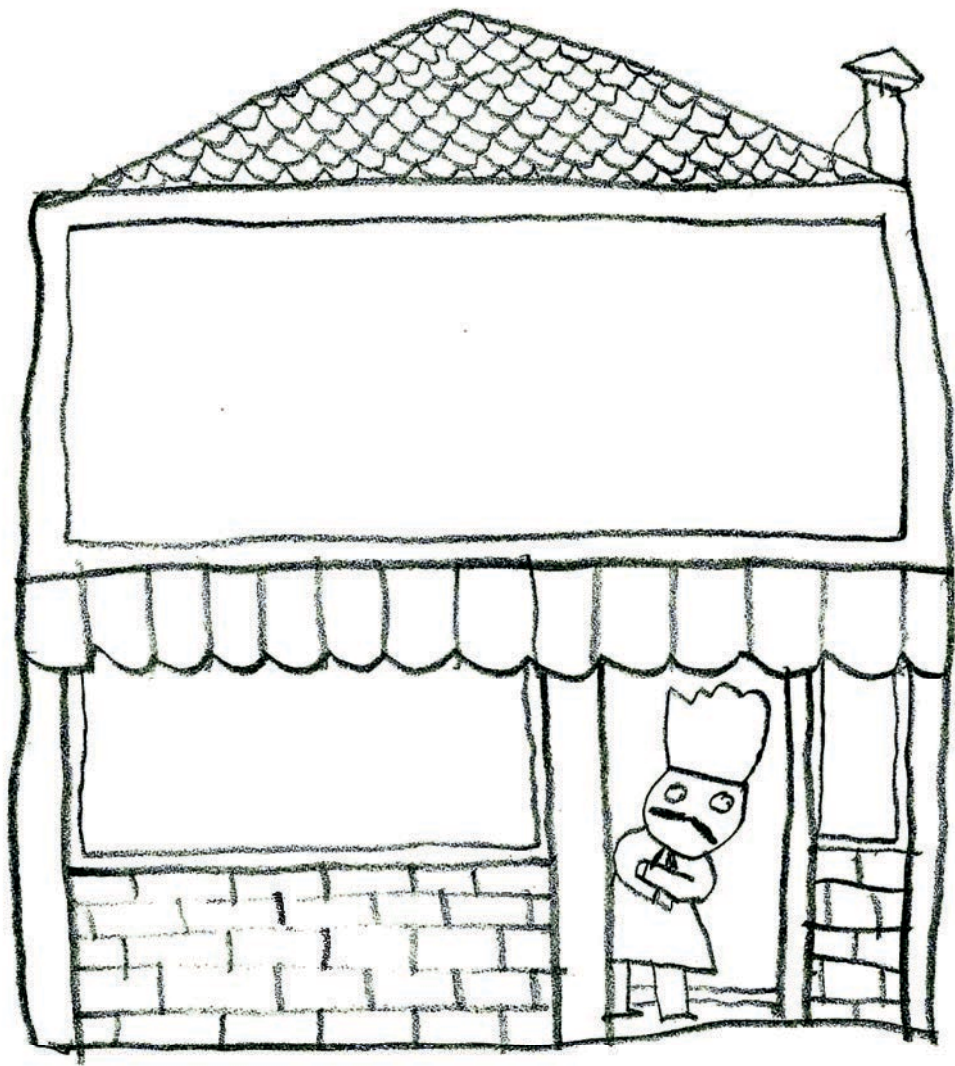


**WER
WOHNT
DENN
HIER?**



Versier de restaurants

Maak het een mooier dan het ander



DRAW A MAP FROM YOUR HOUSE TO SCHOOL
SHOWING 3 THINGS YOU ALWAYS SEE.

IN 5 MINUTES
ONLY

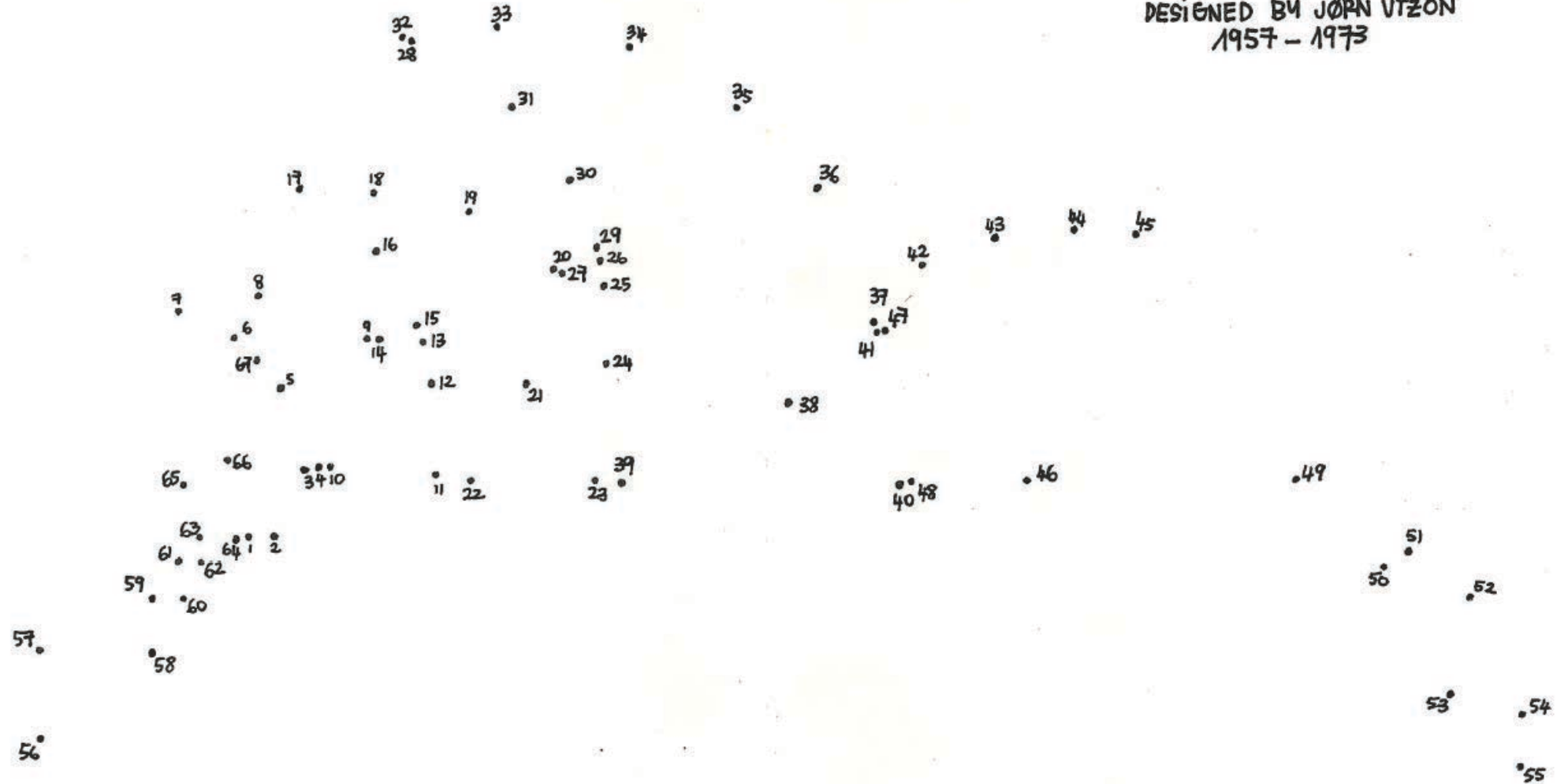


DESIGN YOUR OWN HOUSE

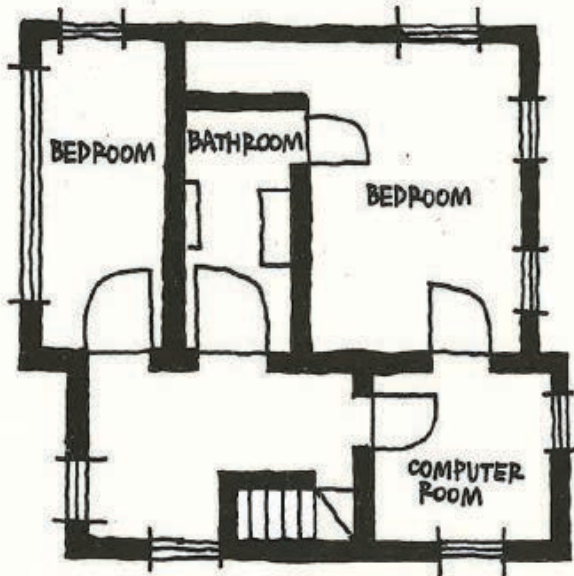
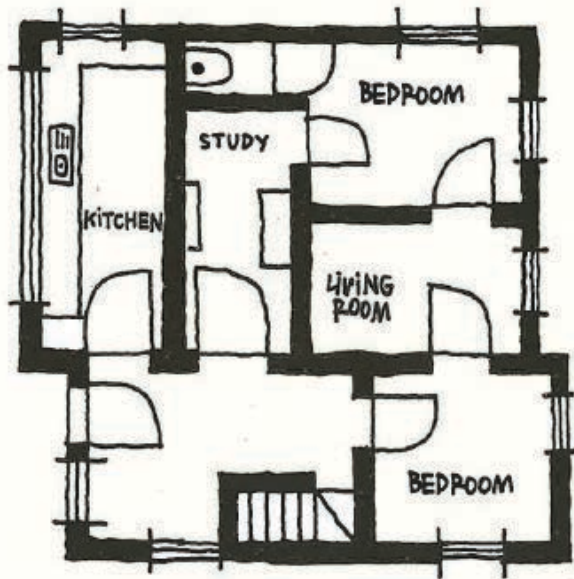
JOIN THE DOTS TO FIND OUT WHAT ICONIC
BUILDING IS HIDING ON THIS PAGE

S O H

DESIGNED BY JØRN UTZON
1957 - 1973



AN ARCHITECT HAS TO LOOK AT THE FOOTPRINT OF A BUILDING AND THINK CREATIVELY ABOUT HOW THE SPACE CAN BE USED



THIS IS THE FOOTPRINT OF A FOUR-BEDROOMED HOUSE. HOW WOULD YOU REARRANGE THE SPACE SO THAT THERE ARE FEWER BEDROOMS BUT MORE LIVING SPACE?

